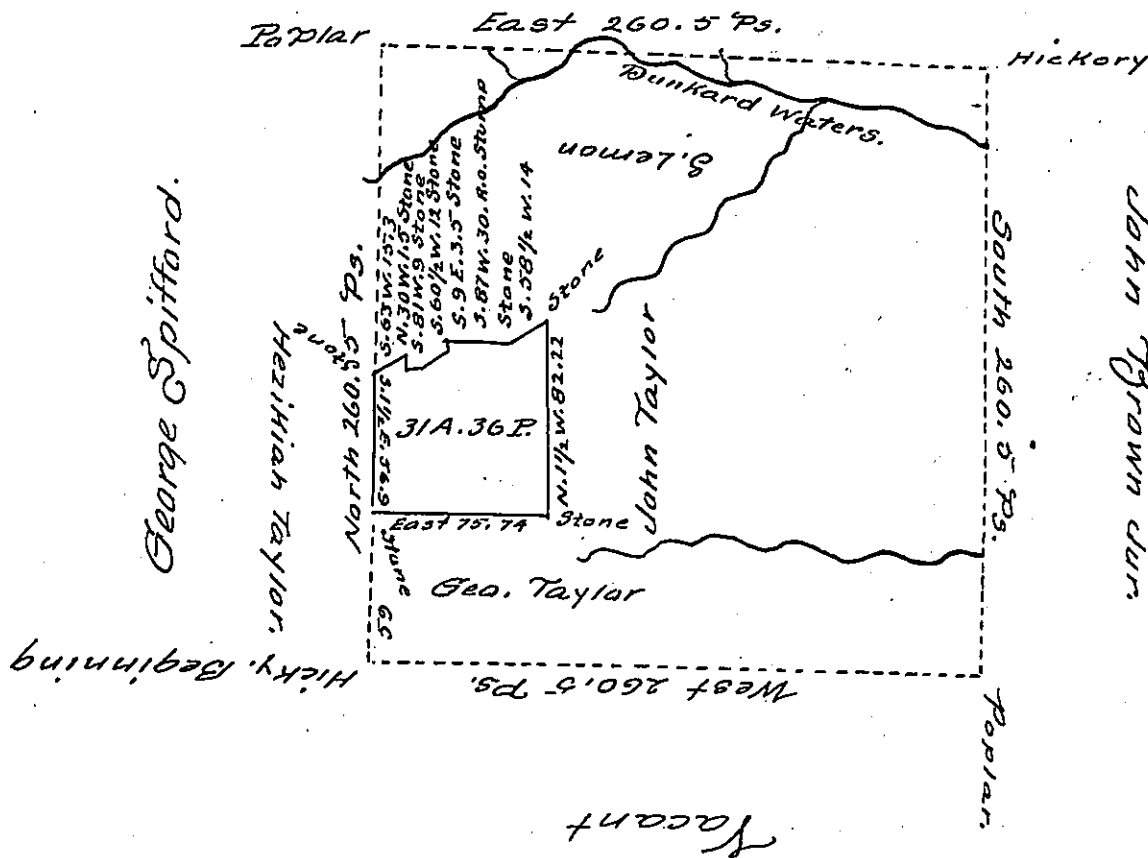


John Brown.



A TRACT of a tract of land situated in the Township of Gilmore and County of Greene, containing Thirty one acres, 36 perches and allowance of Six per cent. for roads, etc. surveyed for Ely Taylor the 12<sup>th</sup> day of January 1901, it being part of a larger tract containing four hundred acres, — perches and allowance, originally surveyed in pursuance of a warrant granted to Nathaniel Gault dated the twenty-third day of December, 1784.

F. B. Dinsmore

County Surveyor.

To James W. Latta, Esq.  
Secretary of Internal Affairs.

IN TESTIMONY that the above is a copy of the original remaining on file in the Department of Internal Affairs of Pennsylvania, made conformably to an Act of Assembly approved the 16th day of February, 1833, I have hereunto set my Hand and caused the Seal of said Department to be affixed at Harrisburg, this Third day of March 1905

*Joseph R. Brown*  
Secretary of Internal Affairs.